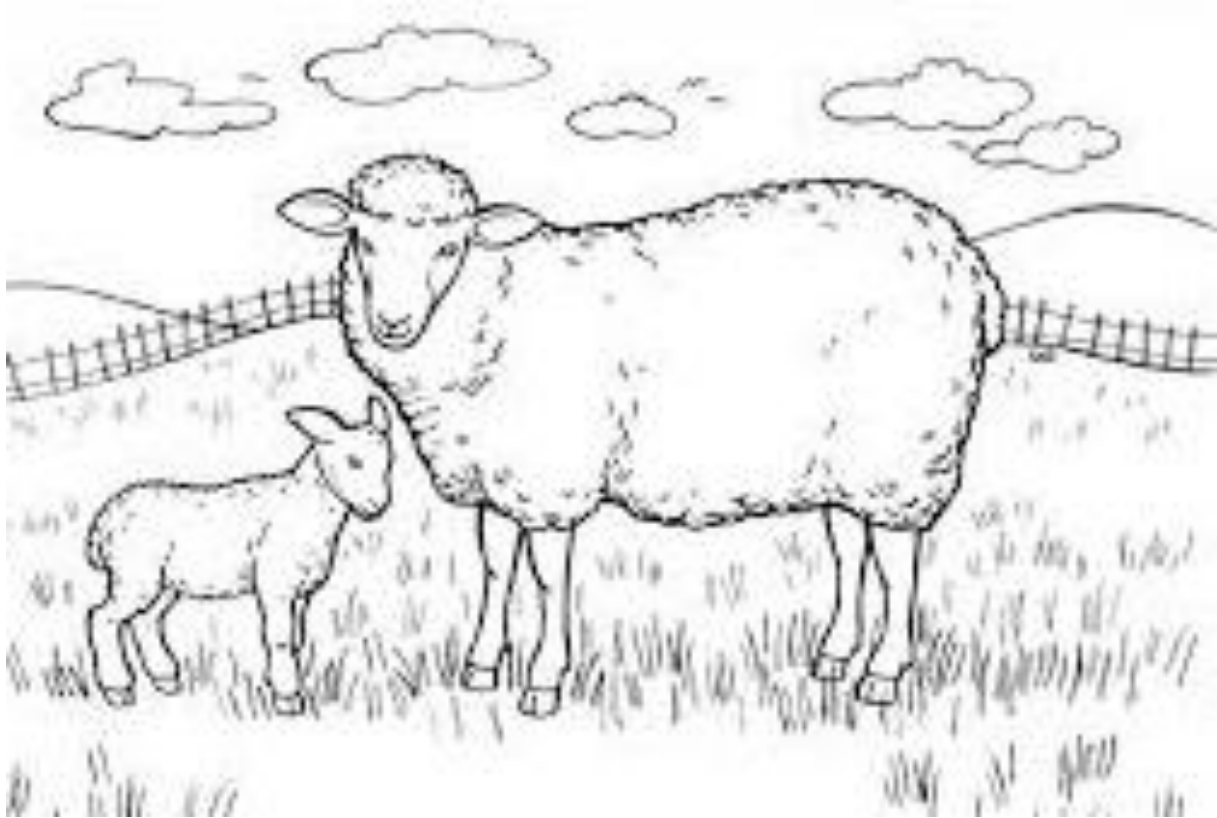


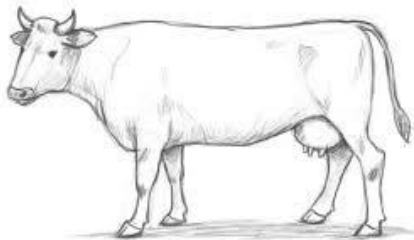
The Dudley Farm Museum



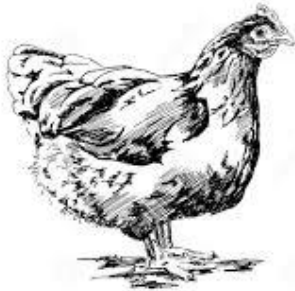
Field Trip Workbook

Identify how these important farm animals are used:

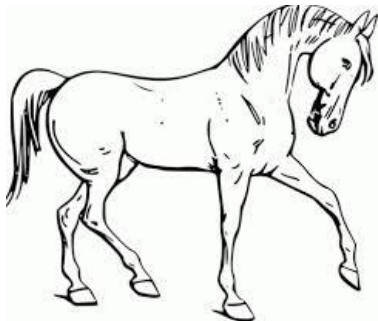
Cow:



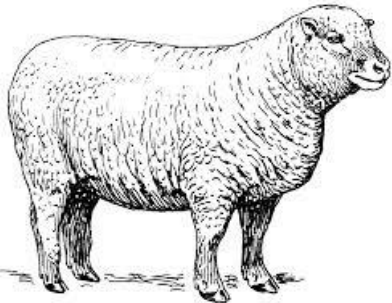
Chicken:



Horse:



Sheep:



Are there other animals that would have been important?



Many farmers grow large gardens. Most of the food we buy is grown by farmers. What are some foods that might be grown on a farm? Write the names of those foods here.

Choose a food from the list you made. Write a paragraph to describe how it goes from seed to your dinner table.

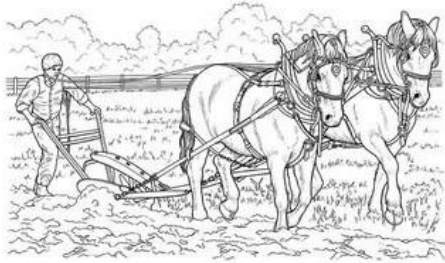


Children on the Dudley Farm were needed to do chores to keep the farm working smoothly. What chores would children do?

Do you do any chores at your home? Are they different from the chores farm children did? Tell us about those differences here.

What did farm kids do for fun? Do you do some of those things?

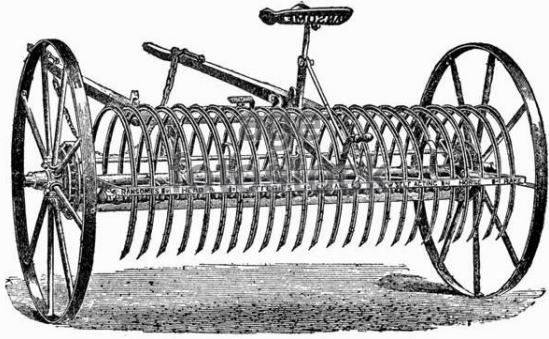
How has farming changed in the last 150 years?



Versus



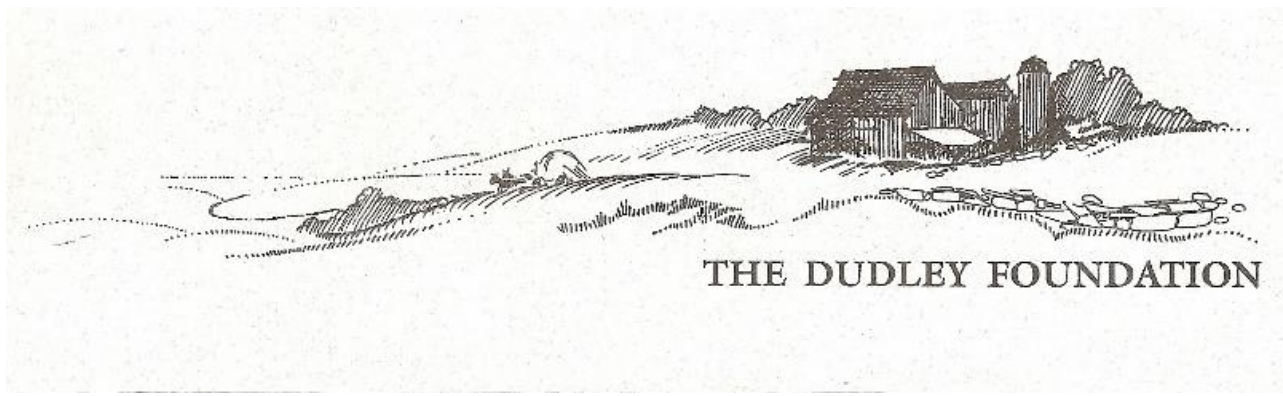
Are there machines today that are similar to ones you saw at the Dudley Farm? List them below.





What type of work did women do on the Dudley Farm? What kind of work do women do now?

Thank you for visiting The Dudley Farm! We hope to see you again!



THE DUDLEY FOUNDATION